

# Pallet Feeder

MODEL HC54150



CAUTION

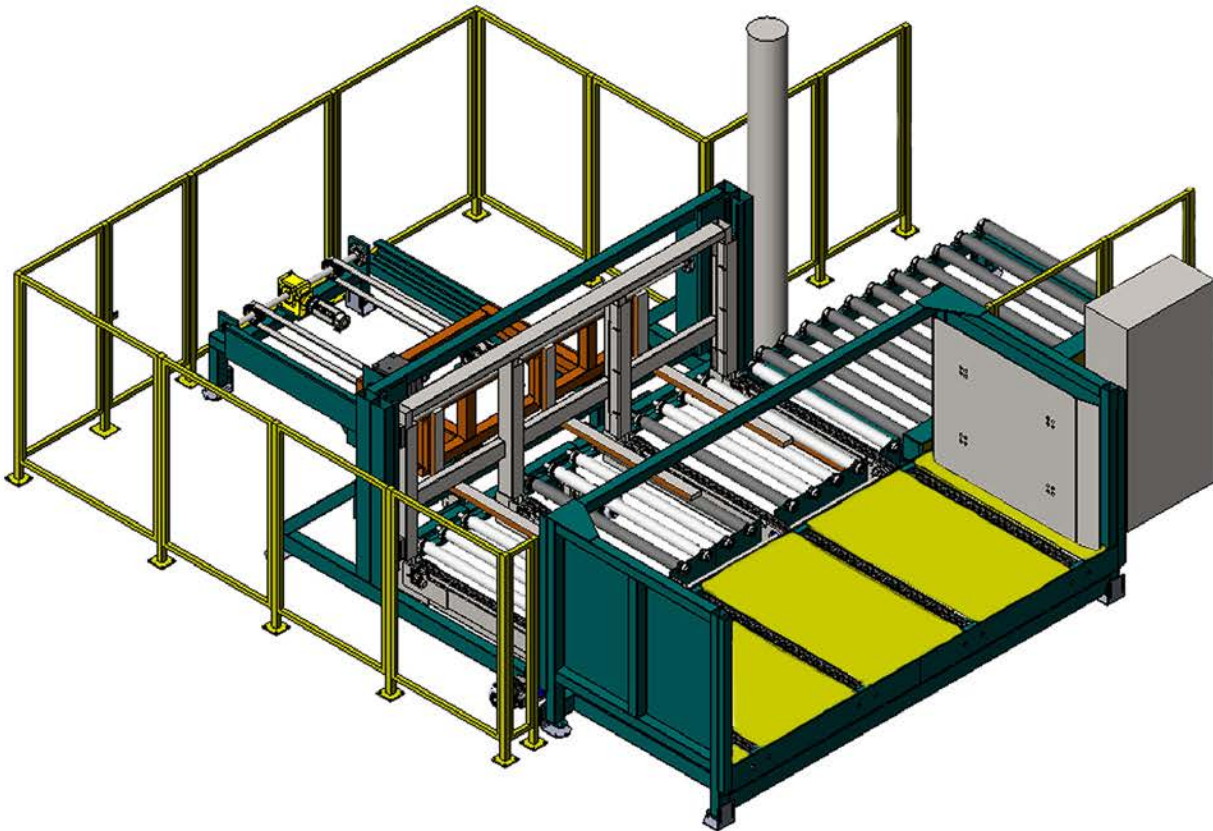
ALIGN PALLETS TO TH

**REL** 

**REL** 

# Pallet Feeder

Operation Sequence.....	2
Capacity.....	3
Safety Features.....	4
Controls.....	5
Motion.....	6
Servo Actuation.....	7
Sense.....	8
Drivelines.....	9
Chains & Rollers.....	10
Control Panel.....	11
Equipment Structure.....	12
Maintenance.....	13
Notes.....	14







1. Load



2. Feed



3. Lift / Fork



4. Convey

# Capacity

## Lengths:

4', 8', 9', 10', 12'

## Thickness:

3.5" to 6"

## Cycle:

4 pallets/min

## Weight Capacity:

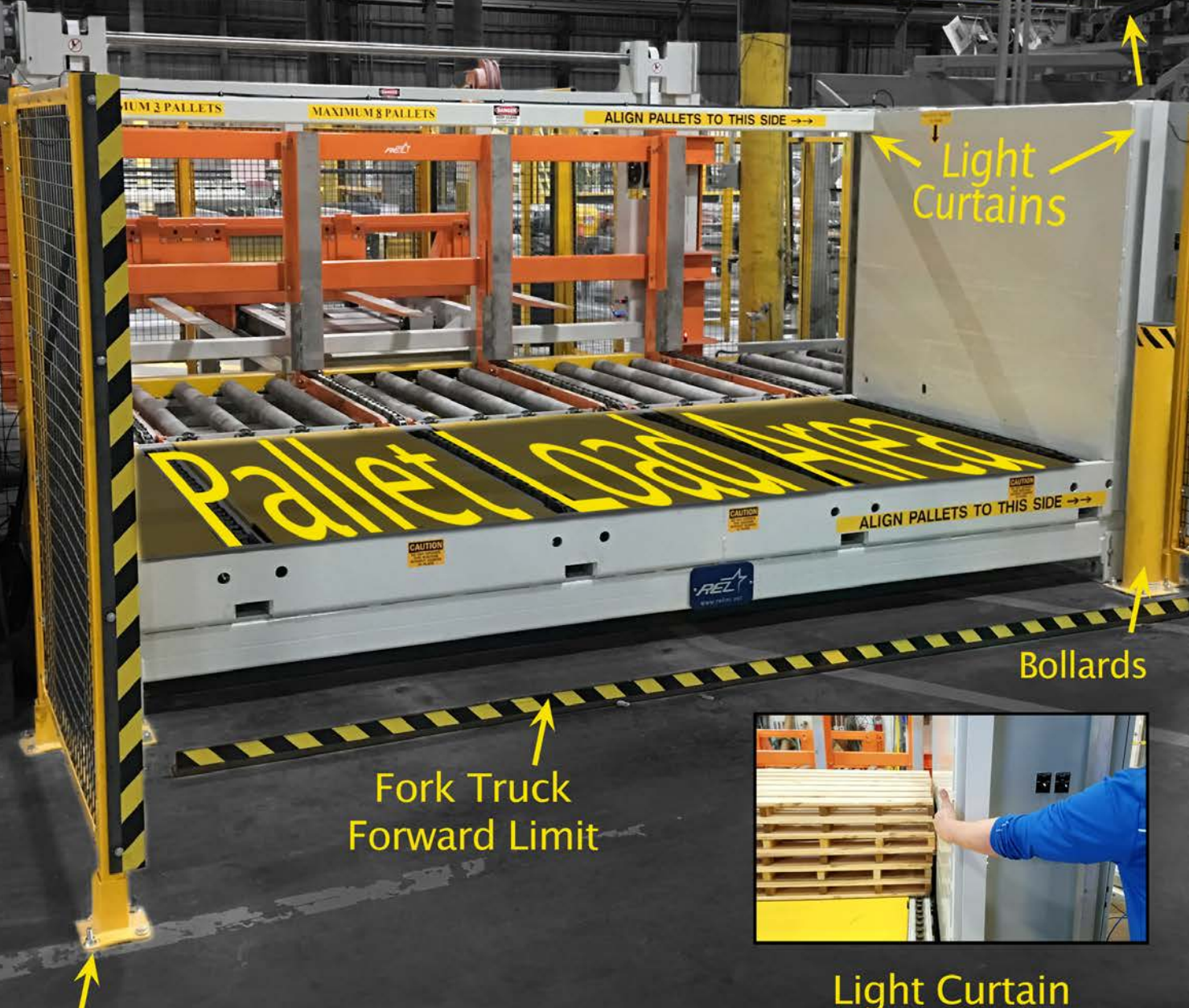
6,000 lbs.



*Safer is Smarter*



# Pallet Loading: Safety Features



Area Guard

Fork Truck  
Forward Limit

Light  
Curtains

Bollards

Light Curtain



# Controls: Operator Control & Maintenance Lockout



Pallet Feed  
Manual Override

Single Point  
Lockout



Pallet Load  
Controls

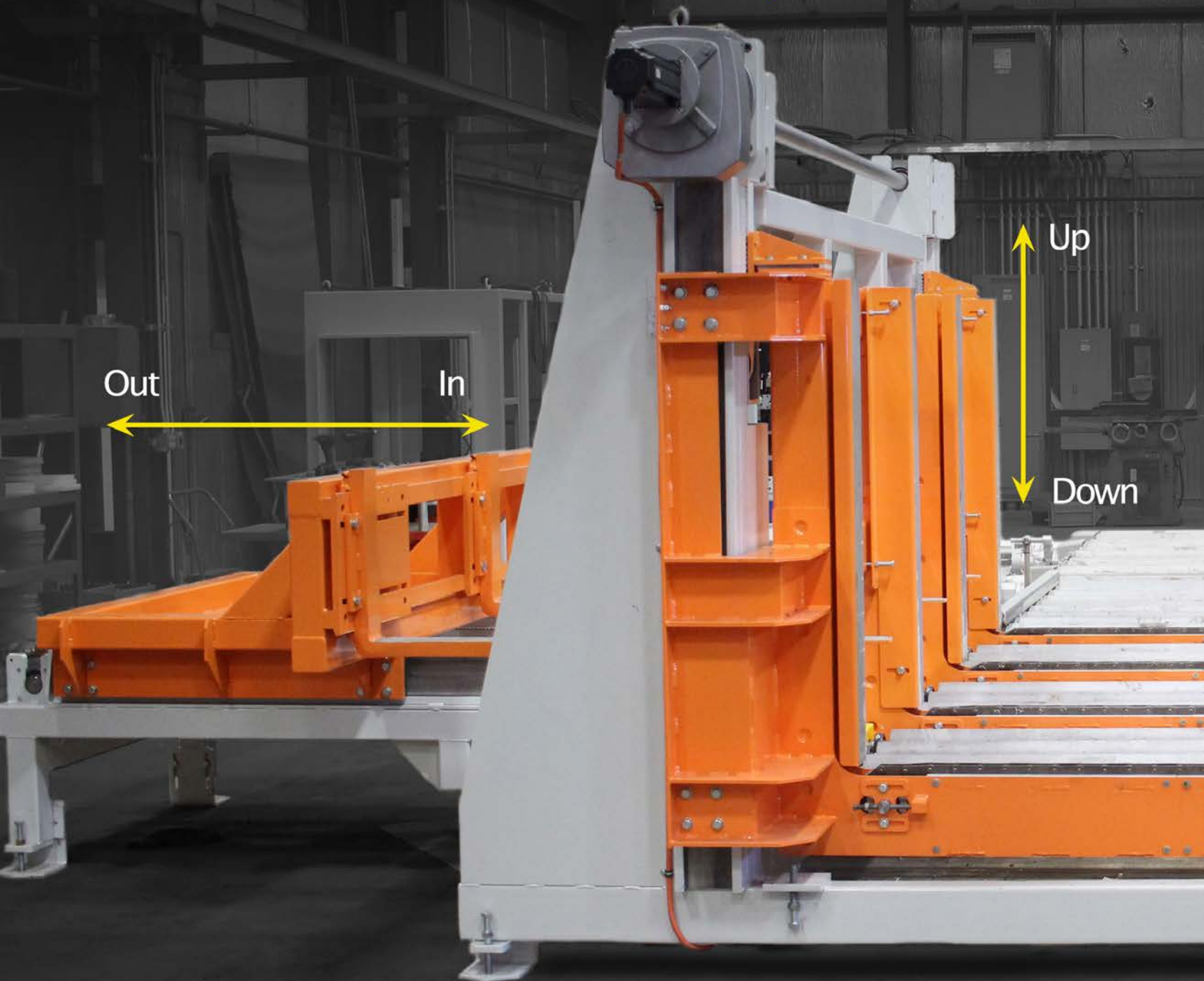


Safer is Smarter

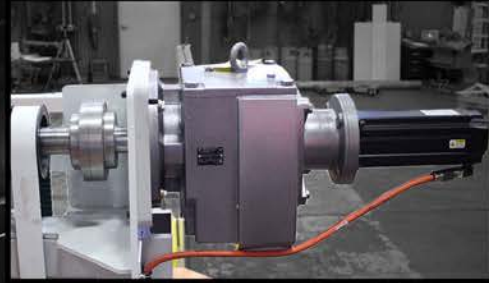


# Motion

- Servo – Motion → Smooth / Robust
- Servo – Precision Control → Fast & Repeatable
- Servo – Process Flexibility → Reliable



# Servo Actuation



**REZ**  
Safer is Smarter



# Sense: Product Tracking

Skewed Stack Sensor

Pallet Stack Sensor



Outgoing Sensor

Options:  
Advance Load  
Fork Sensing



# Drivelines

Timing Belt  
Vertical Index  
Driveline

Timing Belt  
Fork Shuttle  
Driveline

Adjustable  
Forks

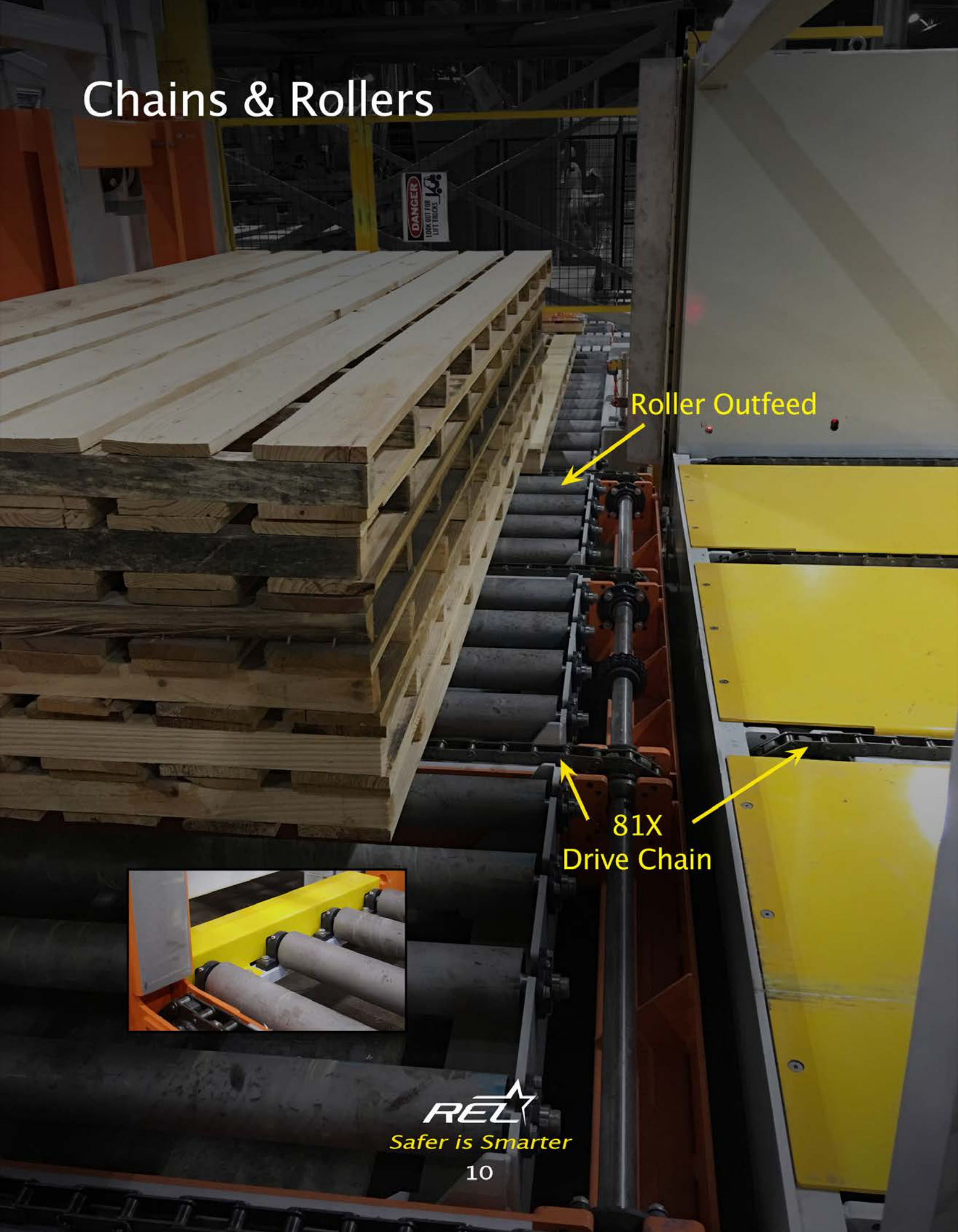
Channel  
Guides



Safer is Smarter



# Chains & Rollers



Roller Outfeed

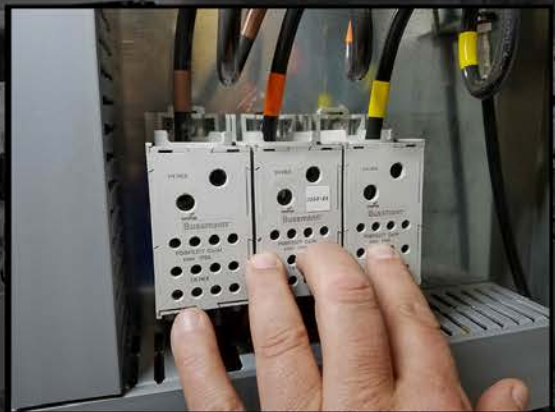
81X  
Drive Chain



Safer is Smarter



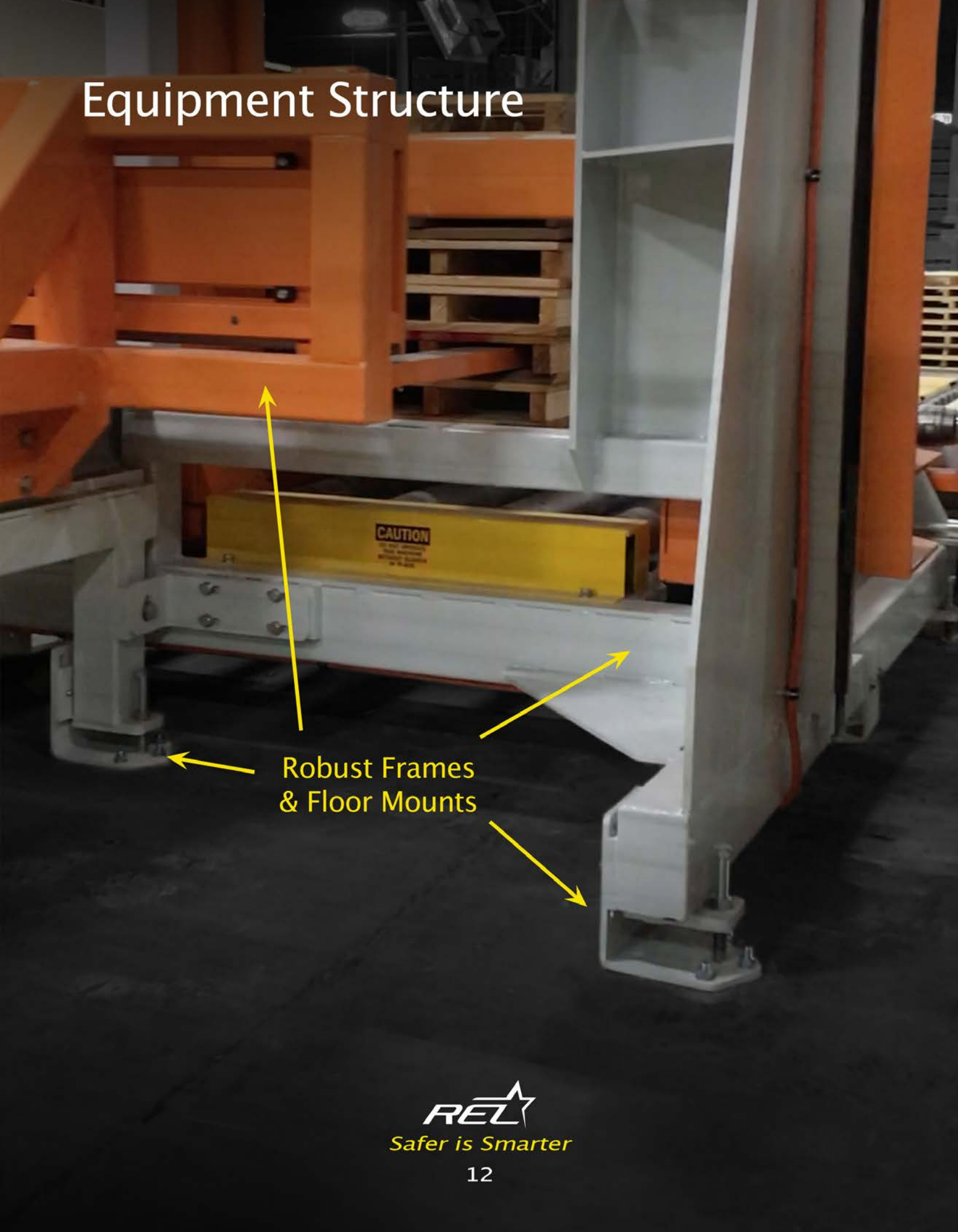
# Control Panel



*Safer is Smarter*



# Equipment Structure



Robust Frames  
& Floor Mounts

# Maintenance



Designed for  
Accessibility



*Safer is Smarter*





REL, Inc.  
57640 North Eleventh Street  
Calumet, MI 49913  
(906) 337-3018  
relinc.net

**CAUTION**  
DO NOT REPAIR  
OR MAINTAIN  
WITHOUT GUARD  
IN PLACE